

**CAPABILITY  
STATEMENT**

**eco**certificates

**2024**

13 years of service excellence in sustainability regulatory compliance



Eco Certificates brings a wealth of industry expertise to every project with 13 years of focused industry experience in the areas of sustainability and energy efficiency regulatory compliance at the state and federal level. Our dedication to excellence and attention to detail have earned us a reputation as a trusted partner in the pursuit of environmentally responsible building practices.

# Areas of Service

**1. BASIX** Certificate: Leveraging years of expertise, we provide BASIX certificates that meet evolving regulatory requirements, ensuring tailored solutions that match your project's unique needs.

**2. NatHERS** Thermal Comfort Modeling: Utilizing the latest in thermal modeling technology, our team offers cost-effective solutions that focus on achieving optimal thermal comfort and energy efficiency.

**3. BCA / NCC Section J DTS** Assessment; Highly detailed and comprehensive assessment of your commercial projects for compliance with energy efficiency requirements of the NCC using advanced computer modelling, ready for a J1V3 alternative solution assessment.

**4. BCA / NCC Section J J1V3** Alternative Assessment; Advance computer modelling and simulation for fine tuning and optimising a tailored solution for compliance with the NCC around your preferred requirements. Builds on top a DTS assessment.

**5. NABERS** Rating: Our streamlined process guides you to a successful NABERS rating, enhancing your building's sustainability credentials.

**6. EnergyPlus** Building Energy Modeling: Employing advanced simulation tools, we provide cutting-edge energy modeling services that cater to specific regulatory and sustainability goals.

**7. Embodied Emissions Assessment:** Streamlined and quality assessment and documentation necessary for the NSW government Mandatory Embodied Emissions Reporting introduced from October 2023



# Our Team

Whether it's a pressing question, an unexpected challenge, or a last-minute adjustment to the project scope, you can count on us to be there for you every step of the way, offering timely assistance and guidance whenever you need it most.

Supported by the bleeding edge of technology and artificial intelligence, our small yet dynamic team comprises seasoned professionals with a collective expertise spanning over a decade in sustainability regulatory compliance for buildings.



## **Manuel Basiri**

DMN & NABERS Accredited Assessor, MIEAust - AACS -  
BCA Section J DTS / J1V3 [in](#)



## **Sim Singh Nanda**

Expert in BCA Section J DTS / J1V3, Speckel Modelling [in](#)



## **Grace Colville**

NatHERS HERO Thermal Modelling, BASIX Consultant,  
Regulation and Compliance [in](#)



## **Gemma**

Artificial Intelligence Agent / Business Management  
Software, Developed by our internal team.  
<https://gemma.app> [in](#)



## **Amir Gomrokchi**

Technical Consultant - Specializes in BCA Section J/  
BASIX Consulting, Speckel/HERO/Design Builder, and  
Thermodynamic Energy Modeling. [in](#)



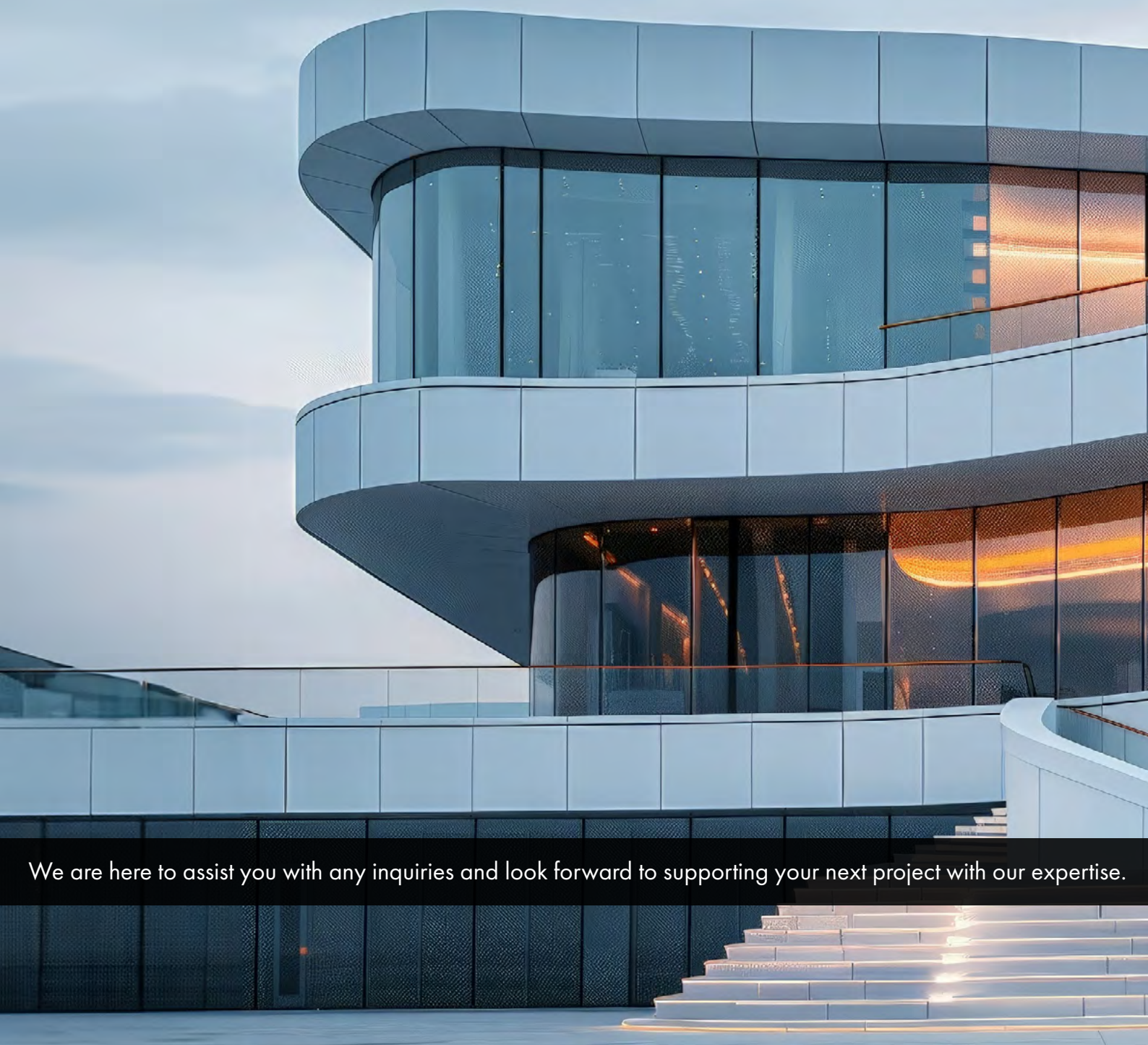
# Contact us

Office | Suite G.03, 23 Ryde Road, Pymble NSW 2073

Postal | PO Box 5172 South Turramurra NSW 2074

1300 16 24 36 | [info@ecocertificates.com.au](mailto:info@ecocertificates.com.au)

[ecocertificates.com.au](http://ecocertificates.com.au)



We are here to assist you with any inquiries and look forward to supporting your next project with our expertise.